

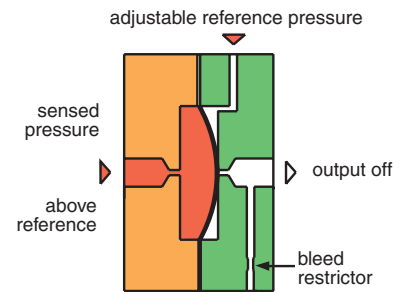
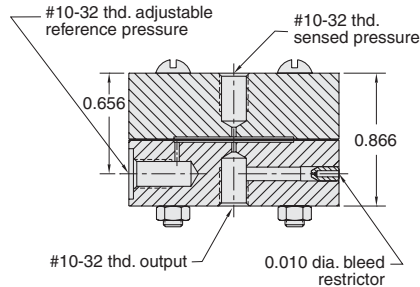
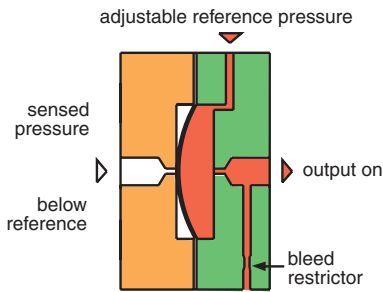
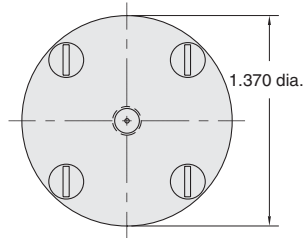


# PRESSURE SENSORS

## Normally-On Single Stage Pressure Repeater



Normally-On Single Stage Pressure Repeater for off-on control of an adjustable reference pressure when a sensed pressure moves above or below the reference pressure level



**Medium:** Reference pressure - air sensed pressure - Air, gas, or liquid

**Input Pressure:** 1 to 150 psig max.

**Air Flow:** 0.029" orifice

**Response Time:** 5 milliseconds

**Differential Sensitivity:** 2%

**Frequency Response:** 60 Hz

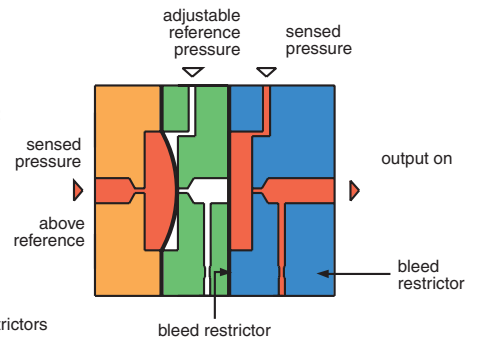
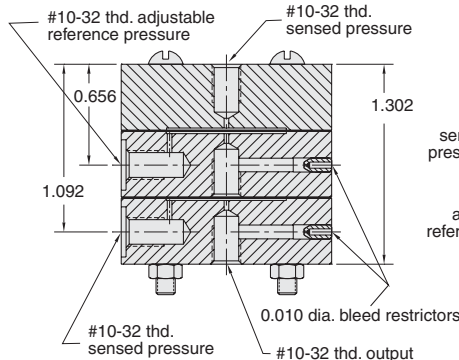
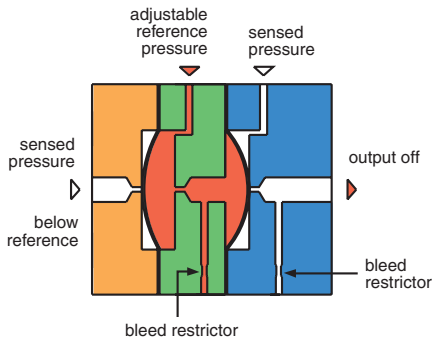
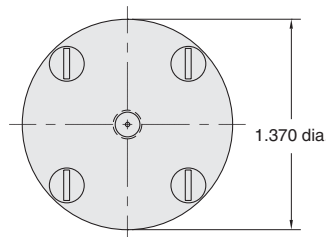
**Materials:** Anodized aluminum body, Buna-N diaphragms

Part No.	Description
<b>1043</b>	<b>Single Stage Pressure Repeater</b>

## Normally-Off Two Stage Pressure Repeater



Normally Off Two Stage Pressure Repeater for off-on control of an adjustable reference pressure when a sensed pressure moves above or below the reference pressure level



**Medium:** Reference pressure - air sensed pressure - Air, gas, or liquid

**Input Pressure:** 1 to 150 psig max.

**Air Flow:** 0.029" orifice

**Response Time:** 5 milliseconds

**Differential Sensitivity:** 2%

**Frequency Response:** 60 Hz

**Materials:** Anodized aluminum body, Buna-N diaphragms

Part No.	Description
<b>1044</b>	<b>Two Stage Pressure Repeater</b>